

Threshold Guidance for Safeguarding Adults in Calderdale

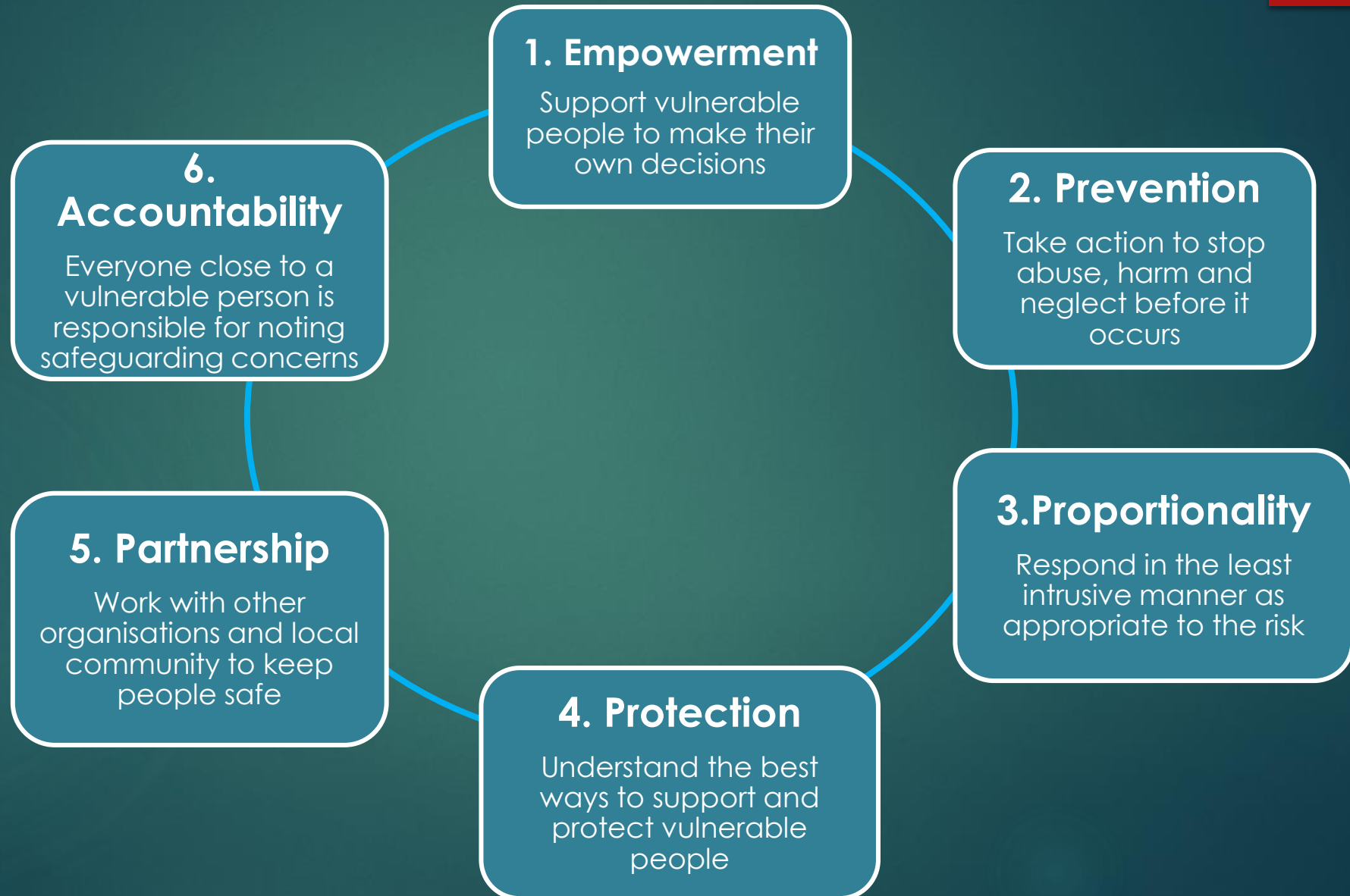
Framework

- ▶ Improve the understanding of what constitutes a Safeguarding Concern in Calderdale
- ▶ Achieve parity for what meets the Section 42 criteria across all community, home and residential settings

Guidance

- ▶ The Thresholds Guidance is now live on the Calderdale Safeguarding Board website.
- ▶ All practitioners, volunteers, and managers who work with Adults with care and support needs should be using and referring to it alongside the Multi-Agency Safeguarding Procedures.

6 Safeguarding Principles



Safeguarding Hub

Gemma Stead

Section 42 of the Care Act

The duty to safeguard an adult applies when all of the following criteria are met:

1. The adult has needs for care and support (whether these have been assessed or are being met by the local authority or not).
2. They are experiencing, or at risk of experiencing abuse or neglect; and
3. As a result of those care and support needs, is unable to protect themselves from either the risk of, or the experience of abuse or neglect.

Best Practice

Safeguarding Referrals

- ▶ Making Safeguarding Personal
- ▶ Consent
- ▶ Mental Capacity
- ▶ Cultural Competence
- ▶ Information Sharing
- ▶ Escalation

Categories of Risk

Local Management

ACTION: keep a written record of what happened and what action was taken

Quality Concerns

Action: comply with local contract monitoring and quality of care compliance. Professionals should keep a written record of what happened, what action was taken and what has been reported to whom

Requires Consultation

ACTION: discuss with your organisations Safeguarding Lead and/or the Safeguarding Hub on 01422 393000. After consultation record the concern and the actions you have taken.

Safeguarding Concern

ACTION: Incidents at this level should be reported directly to the Safeguarding Hub on 01422 393000.

If there is any indication a criminal act has occurred and the matter is urgent, the Police must be contacted.

Types of Abuse

INDICATORS OF DISCRIMINATORY / HATE CRIME

INDICATORS OF DOMESTIC ABUSE

INDICATORS OF FINANCIAL OR MATERIAL ABUSE

INDICATORS OF MODERN SLAVERY

INDICATORS OF NEGLECT & ACTS OF OMISSION – GENERAL & FALLS

INDICATORS OF NEGLECT & ACTS OF OMISSION – PRESSURE DAMAGE

INDICATORS OF NEGLECT & ACTS OF OMISSION – MEDICATION ERRORS

INDICATORS OF ORGANISATIONAL ABUSE

INDICATORS OF PHYSICAL ABUSE

INDICATORS OF PSYCHOLOGICAL ABUSE

INDICATORS OF SELF NEGLECT

INDICATORS OF HOARDING

INDICATORS OF SEXUAL ABUSE



Safeguarding is Everyone's Business

Summary

11

- ▶ The Thresholds Guidance document needs to be understood by all staff and volunteers within your organisation. Training is available from the Safeguarding Adults Board
- ▶ sally.fletcher@calderdale.gov.uk or [Training and development – Safeguarding Calderdale](#)

Thank You

GEMMA STEAD