



Calderdale Safeguarding Children Partnership

The Calderdale Safeguarding Children Partnership (CSCP) has a vision that children and young people in Calderdale are safe and achieve their potential and that safeguarding is everyone's business.

As a safeguarding partnership we are clear about how we do this and what this means for our partner organisations, for children, young people and their families as well as the wider community.

Our vision is further defined by our statutory responsibilities and obligations, and these inform our priorities. Our vision led priorities are:

1. We are assured that children receive the right help at the right time
2. We know which children are vulnerable and are assured they are protected
3. Scrutiny and challenge evidences effective safeguarding
4. We create a learning culture which consistently improves outcomes for children and young people

A handwritten signature in blue ink, appearing to read 'Julie', enclosed in a thin blue rectangular box.

Julie Jenkins
Director of Children and Young People's Services
Calderdale MBC

A handwritten signature in blue ink, appearing to read 'Sarah', enclosed in a thin blue rectangular box.

Sarah Baker
Superintendent Operations
Calderdale District

A handwritten signature in blue ink, appearing to read 'Penny Woodhead', enclosed in a thin blue rectangular box.

Director of Nursing and Quality
Calderdale Cares Partnership
NHS West Yorkshire Integrated Care Board

Calderdale Safeguarding Children Partnership

This document outlines the Calderdale Multi-Agency Safeguarding Arrangements (MASA) in line with 'Working Together to Safeguard Children' (WTSC) 2018. The partnership is known as the 'Calderdale Safeguarding Children Partnership' (CSCP) and is coterminous with the Calderdale local authority area.

The three lead safeguarding partners are as follows:

West Yorkshire Police: nominated officer – Superintendent Sarah Baker

Calderdale Council: nominated officer – Julie Jenkins, Director of Children and Young Person's Services

NHS West Yorkshire Integrated Care Board : nominated officer – Penny Woodhead, Director of Nursing and Quality

Independent Scrutiny is undertaken by through the CSCP [Independent Scrutiny and Assurance Framework](#).

The CSCP draws on a positive environment of multi-agency working in Calderdale. We are committed to partnership working between the three key partners, with all relevant agencies, with children and young people and with local communities. We aim to promote the welfare of all Calderdale children and to ensure that children and young people are effectively safeguarded. We aim to achieve this by implementing WTSC (2018) effectively and imaginatively.

The CSCP actively monitors and evaluates the work of the statutory partners and seeks assurance about effectiveness and impact on children and families. The CSCP promotes multi-agency learning about the identification, assessment and response to initial need and risk and to effective joint working arrangements for the diverse and distinct services in Calderdale.

Governance Arrangements

The CSCP Executive meets bi-monthly and is chaired by each of the three strategic partners in turn. The membership of the CSCP Executive consists of each of the strategic leads, the chairs of each sub-group and at a minimum a representative from a voluntary sector organisation and a member from the education sector. (See Appendix 1 for Structure).

The CSCP works in partnership with a list of 'relevant agencies' (see Appendix 2), as required by WTSC (2018) including early years' settings, schools and colleges in the area. Relevant organisations are represented through membership and attendance at CSCP Subgroups and through audit / quality assurance / review activity.

The CSCP works alongside a group young people called Young Advisors, who are instrumental seeking the views and feedback from a wide range of young people. The CSCP partners also contribute views from children, parents, families and communities to the Executive and through the subgroups and challenge events, feedback is sought from front line professionals and middle managers.

The CSCP maintains an up-to-date website that contains relevant information to support professionals, to inform the local partnerships and provide clear links to policy, procedure, tools, guidance, training and advice.

The role of the CSCP

The CSCP employs a team of support staff as agreed by the Executive, funded by the three key partners, who is hosted by the Council. Support functions are shared with the Calderdale Safeguarding Adults Board (CSAB) and where possible processes and priorities are aligned to engender more streamlined workstreams and a reduction in duplication.

The CSCP reporting arrangements include:

- Analysis of multi-agency statistics, performance measures and outcomes
- Scrutiny of rolling reports from partner organisations or workstreams
- Organisational Safeguarding Checklist self-assessments and challenge events
- Single and multi-agency audits
- Practitioner and partnership challenge events
- Child Death Overview Panel activity
- Child Safeguarding Practice Reviews
- Escalations from individual or multi-agency services about excellent practice or areas of risk

[Liaison with other partnerships](#)

The CSCP is committed to multi-disciplinary partnership working in order to overcome 'silo' working and to deliver effective outcomes and a positive impact on the lives of young people. The CSCP will liaise with other partnerships, such as the Safeguarding Adult Board, Community Safety Partnership, Health and Wellbeing Board and the Domestic Abuse Strategic Group, to further streamline services, identify and address gaps reduce duplication.

The CSCP is committed to regional and national co-operation wherever the Executive identify this as being in the best interests of the organisation. We co-operate with the West Yorkshire sub-region wherever possible, for example, sharing interagency policies and procedures, delivering multi-agency master classes and regional conferences, contributing to the West Yorkshire Risk and Vulnerability Strategic Group, sharing Child Death Overview Arrangements and a collective Safeguarding Organisational Checklist (Section 11).

Nationally, the Executive members, supporting secretariat and key partners collaborate nationally through networks, through The Association of Safeguarding Partners (TASP) and through national bodies who lead on specific areas of safeguarding.

[12-monthly report](#)

The Executive produces 12-monthly reports on the effectiveness of safeguarding arrangements in Calderdale. The report is scrutinised independently, and this scrutiny is published alongside the report. Both reports are available on the CSCP website.

[Child Safeguarding Practice Reviews \(CSPR\).](#)

The partnership works to improve child protection and safeguarding practice through reviews of practice, scrutiny and challenge functions. The CSCP, through review, identifies areas of good practice and areas for improvement. The reviews are conducted in such a way to provide opportunities to explore why individuals and organisations operate in a particular way, making use of relevant research, case evidence, incorporating learning from national, regional and local reviews to inform systemic findings and learning.

The process places the child at the centre, including them and their families (where possible) to understand their lived experience. Reviews involve practitioners and managers in order to understand practice from the front line. Regular monitoring and follow-up actions from reviews/learning opportunities ensure they evidence a real impact on improving outcomes for children. Challenge Events following the completion of reviews evidence whether improvements are sustained.

Child Death Overview Panel.

The Child Death Overview Panel (CDOP) remains a function that is overseen by local safeguarding arrangements in WTSC (2018). Calderdale partners with Kirklees to provide a joint panel and includes learning from reviews in Wakefield in order to increase the footprint and the benefits of learning from a larger cohort. The three localities continue to develop shared systems, processes and ways of working in consultation with stakeholders.

Learning and workforce development.

The CSCP is fully committed to multi-agency workforce development and employs a number of ways to deliver key safeguarding messages and test how the learning has been implemented in practice. Learning from practice reviews, research, local intelligence, and from expert knowledge is utilised as the basis for the CSCP workforce development. Learning opportunities match demand and need and an annual workforce development report is produced. Evaluation includes seeking evidence from practitioners through engagement activities, Practitioner Learning Events, existing forums, and from children and families, formal agency feedback processes and multi-agency audits.

Threshold document

The Calderdale threshold document can be found here: <https://safeguarding.calderdale.gov.uk/wp-content/uploads/2021/09/Continuum-of-Need-and-Response-2021.pdf> ;

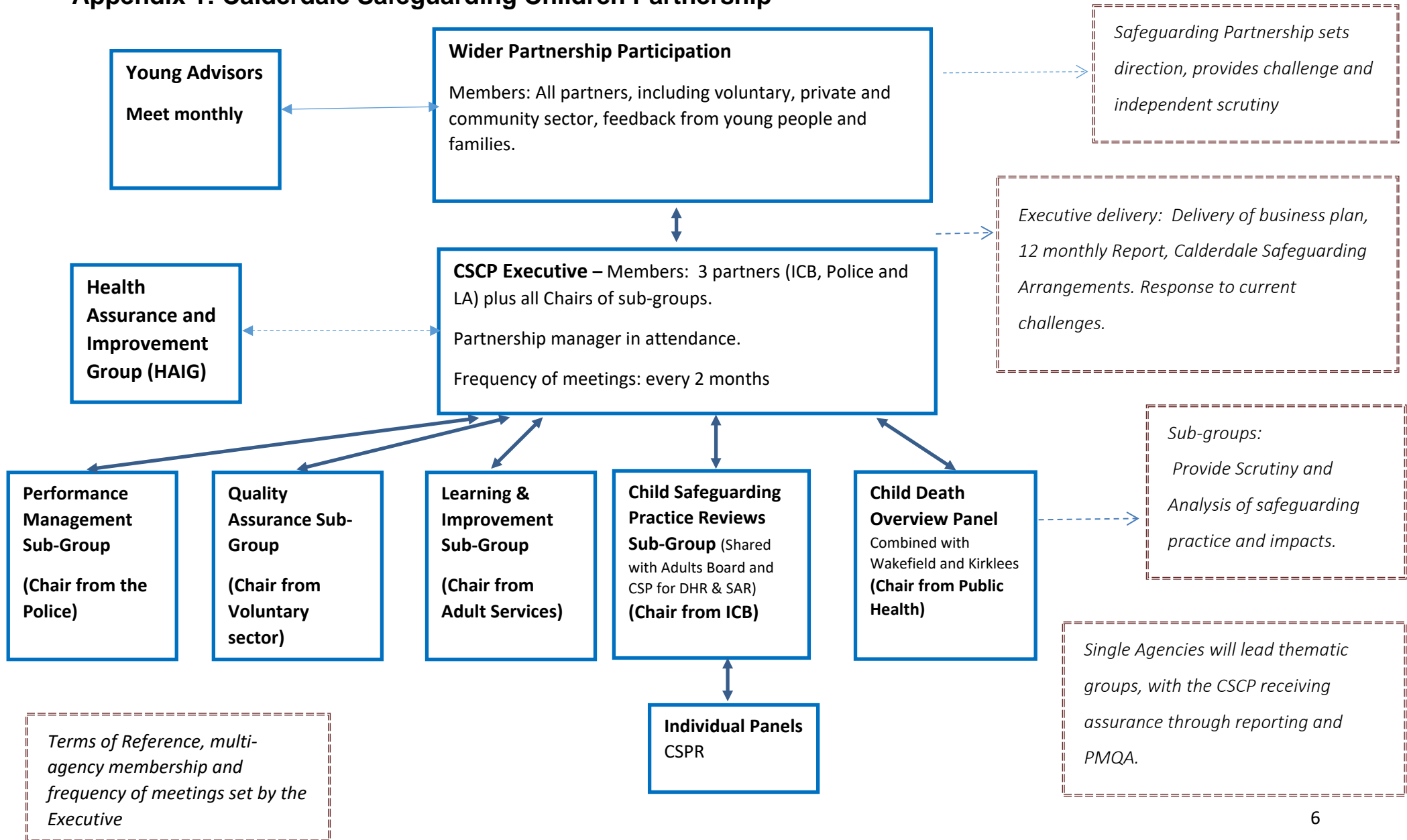
Disputes and escalation

The CSCP Resolving Professional Disputes policy is based on the [West Yorkshire Procedure](https://safeguarding.calderdale.gov.uk/wp-content/uploads/2018/01/Resolving-Professional-Disagreements-min.pdf): <https://safeguarding.calderdale.gov.uk/wp-content/uploads/2018/01/Resolving-Professional-Disagreements-min.pdf>

Independent Scrutiny and Assurance

The CSCP Independent Scrutiny and Assurance Framework outlines how the partners explain joint working arrangements are monitored in Calderdale to assess whether they are working effectively to keep children safe including performance management, audit and scrutiny: <https://safeguarding.calderdale.gov.uk/wp-content/uploads/2021/11/CSCP-independent-scrutiny-and-assurance-framework-1.pdf>

Appendix 1: Calderdale Safeguarding Children Partnership



Appendix 1 (accessible) Calderdale Safeguarding Children Partnership

CSCP Executive – Members: 3 partners (Integrated Care Board, Police and Local Authority) plus Chairs of sub-groups.
Partnership manager in attendance.
Frequency of meetings: every 2 months
Executive delivery: Delivery of business plan, 12 monthly Report, Safeguarding Arrangements.
Response to current challenges.

The subgroups reporting to and governed by the CSCP Executive are:

Performance Management Sub-Group

Chair from the Police

Quality Assurance Sub-Group

Chair from Voluntary sector (Domestic Abuse Service)

Learning & Improvement Sub-Group

Chair from Adult Services

Child Safeguarding Practice Reviews Sub-Group (Shared with Adults Board and Community Safety Partnership for Domestic Homicide Reviews Safeguarding Adult Review. Individual Panel meetings for each review that report into this subgroup)

Chair from ICB

Child Death Overview Panel (Combined with Wakefield and Kirklees)

Chair from Public Health

Terms of Reference, multi- agency membership and frequency of meetings set by the Executive. Sub-groups also provide Scrutiny and Analysis of safeguarding practice and impacts.

Health Assurance and Improvement Group (HAIG)

Feeds to the CSCP Executive.

Wider Partnership Participation

Members: All partners, including voluntary, private and community sector, feedback from young people and families.

Safeguarding Partnership sets direction, provides challenge and independent scrutiny.

Young Advisors

Meet monthly and feed into the CSCP Executive as part of the wider partnership arrangements.

Single Agencies will lead thematic groups, with the CSCP receiving assurance through reporting and PMQA.

Appendix 2 – Relevant Agencies

- Adult Services and Wellbeing
- CAFCASS
- Calderdale and Huddersfield Foundation Trust (CHFT)
- Calderdale College
- Calderdale Governors Association (CGA)
- Early Years Representation
- Locala
- National Probation Service (NPS)
- NHS England
- Together Housing
- Primary and Secondary School Representation
- Public Health
- South West Yorkshire Partnership Foundation Trust (SWYPFT)
- Voluntary and Community Sector (VCS)
- West Yorkshire Fire Service
- Women's Centre
- Youth Offending Team (YOT)
- Children's residential homes including private providers
- Independent Fostering Agencies